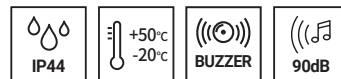


## S80 Series



### PRODUCT SPECIFICATION

S80AR | S80AU

**Materials** Lens-AS, Housing-ABS, Reflector-Heat resistant ABS  
**Ambient operating temperature** -20°C to +50°C  
**Volume** Max.90dB at 1m  
**Protection rating** IP44  
**Revolving speed** 120-140RPM

- Equipped wall mount allows for easy assembly. Additional mounting brackets not required
- Terminal block designed inside the side mount bracket enables easy wiring
- Can select between standard and built-in buzzer type depending on installation environment



S80AR

### S80AR / S80AU Bulb Revolving Warning Light

Model number	Voltage	Current	Bulb			Certificates	Weight	Color
			Spec	Standard	Parts no			
S80AR S80AU	DC12V	530mA	12V5W	T16x35 15S	5	CE	0.31kg	● R-Red
	DC24V	370mA	24V5W	T16x35 15S	6		0.31kg	● A-Amber
	AC110V	80mA	12V5W	T16x35 15S	5		0.50kg	● G-Green
	AC220V	40mA	12V5W	T16x35 15S	5		0.50kg	● B-Blue

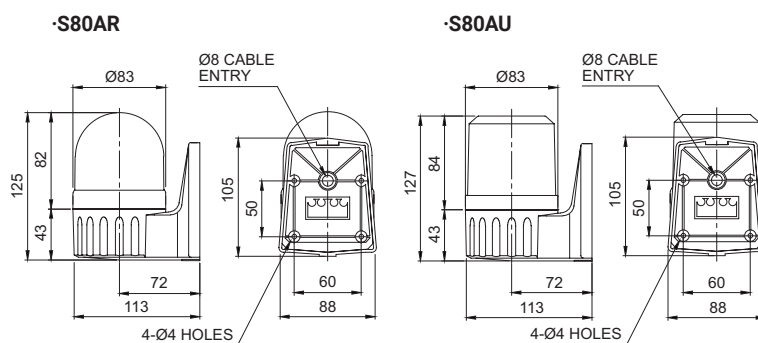
※ CE compliant: DC12V, DC24V



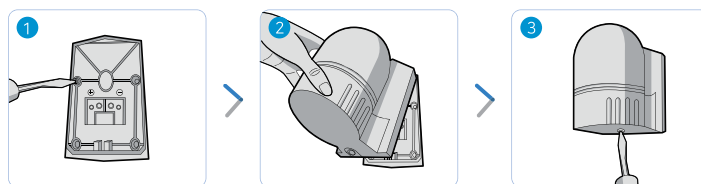
S80AU

### Technical Diagram

Units: mm



### Mounting Instructions



1. Secure the base plate to the mounting surface, and the Power line to the terminal block
2. Mount the warning light by inserting the ring(hook) into the upper part of the base plate
3. Screw in the bolt at the base of the mounting bracket to complete assembly

### Ordering Specification

S80AR	-	BZ	-	220	-	R
[Model number]		[Buzzer option]		[Voltage]		[Color]
S80AR		(None)		12-DC12V		● R-Red
S80AU		- No buzzer		24-DC24V		● A-Amber
		BZ		110-AC110V		● G-Green
		- Built-in buzzer		220-AC220V		● B-Blue

### Wiring Instructions

- External Power line  
UL1015 AWG18(0.75sq) x 2C 400mm
- DC Type  
: Black output line is negative(-)



### S80A Series enable easy wiring

S80A Series enables easy wiring with its terminal block attached to the fixed base plate. With this system the contacts in the housing sends Power directly to the terminal block.